

MUNICIPAL NEWSLETTER JULY- AUGUST 2024

TOWNSHIP OF



MATACHEWAN

Vision Statement

Matachewan strives to preserve its friendliness and to create a progressive community that will have economic growth and bring wealth to all through strong leadership and community involvement.

Mayor and Council

Contact information

Mark Stickel – Mayor
Cell: 905-394-1943
Home: 705-565-2306

Email: Mayorstickel@matachewan.ca

Michael Young – Deputy Mayor
Home: 705-565-2566

Email: DeputyMayoryoung@matachewan.ca

Cheryl Drummond – Councillor
Cell: 705-642-7461

Email: Councillordrummond@matachewan.ca

Dianne Gilbert – Councillor
Cell: 705-365-6282

Email: Councillorgilbert@matachewan.ca

Emily Stewart – Councillor
Cell: 705-570-0712

Email: Councillorstewart@matachewan.ca

Taxes

Interest of 1.25% per month will be added to all unpaid taxes after the due date.

Water/utility

interest of 5% will be added to unpaid utility bill after the due date

Tax and utility bills payments can be made by

DEBIT, cheque, or cash or at the bank or online from RBC, TD, BMO, and Credit Union.

Email

accounting@matachewan.ca for Electronic Funds Transfer (EFT) payments,

use "What township is it?" as the security question "Matachewan" as the answer.

TAX & WATER SCHEDULE 2024

Interim Taxes	Dates
Send out	January 19/24
1st Installment Due	February 29/24
2nd Installment Due	April 30/24
Final Taxes	Dates
Send out	July 19/24
1st Installment Due	August 30/24
2nd Installment Due	October 31/24

Water Bills	Dates
# 1 Send out	February 16/24
Due	March 29/24
# 2 Send out	May 17/24
Due	June 28/24
# 3 Send out	August 16/24
Due	September 27/24
# 4 Send out	November 08/24
Due	December 13/24

Municipal Office Hours

Monday-Friday 8:30am - 5:00pm

Council Meetings are being conducted on

Catalis (All-Net) Meetings

Water

If you have any concerns regarding the water ie: colour, sediment, odour please contact the office 705-565-2274

Matachewan Website Business Directory

If you would like to add your business to the Townships website directory Email your business information to admin@matachewan.ca

The Salvation Army will be doing a monthly delivery to Matachewan!

This will be done at the end of every month. If you require their services, you can contact the Salvation Army at

1-705-567-5877

To obtain these services you will need to do an intake form with Amy Rivait.

You must also reach out each month to notify them of what you need.

Matachewan Landfill Hours

Open Holiday Mondays from Victoria Day to Thanksgiving

Monday	<u>CLOSED</u>
Tuesday	10:30 a.m. - 6:30 p.m.
Wednesday	<u>CLOSED</u>
Thursday	10:30 a.m. - 6:30 p.m.
Friday	<u>CLOSED</u>
Saturday	10:30 a.m. - 6:30 p.m.
Sunday	<u>CLOSED</u>

Recycling Dates

Recycling Pick up is every other Wednesday

July 3 July 17

July 31 August 14

August 28 September 11

September 25 October 9

Recycling

If you wish to contact

Eco Logix Please call

705-647-2322

& leave a message

NOTICE

All Municipal Vehicles have been equipped with Cameras.

All DOG OWNERS

All Dog Owners must purchase a dog tag for each dog every year

2024 tags are available at the Town Office

Dog Tags - \$30.00 Spayed/Neutered or \$15.00 (with Veterinary documents)

No Exemptions except for Service animals (with proof)

Contact the Municipal Office for By-law 2013-15 regarding other Species

All pets **MUST** be leashed when off property.

Open Air Burning By-Law 2018-12

Approved Burning Device means a device in which a recreational fire may be set, made from pottery, metal or masonry, with a firebox that is no larger than 60 centimetres or 24 inches in diameter, located in an area that will not pose a risk for fire spread and that is equipped with an enclosed hearth with a 6 millimeters or ¼" inch mesh screen completely covering the top, or a hearth that is enclosed on all sides that has a 6 millimeters or ¼" inch mesh screen completely covering the top.

It may also include an Approved outdoor fireplace.

Continued use of any device that has been created prior to the passing of this bylaw will be allowed provided it is equipped or retrofitted with an approved

"Spark Arrester".

Please visit our website for the full By-Law www.Matachewan.com

Fireworks By-Law 2018-06

Effective February 22, 2018, all residents are required to obtain a permit from the Fire Department to set off fireworks within the Municipality.

Please visit www.matachewan.com and click on the link "By-Laws" for other rules and regulations having to do with fireworks.

Speed Limit By-law 2018-18

The speed limit within the Town of Matachewan is

40km/hr. ATV/Snowmobile 20km/hr.

Watch for Children Playing **SLOW DOWN**



VOLUNTEERS NEEDED!

FOR THE PROPERTY STANDARDS COMMITTEE

The Township of Matachewan is looking for a minimum of 3 volunteers for our Property Standards Committee, reflecting By-Law 2022-34

Contact us today to learn more about this volunteer opportunity.
1-705-565-2247 or Email
admin@matachewan.ca

www.matachewan.com

WHAT THINGS SHOULD NOT BE STORED IN A SHIPPING CONTAINER?



You should not pack any hazardous, illegal, explosive or flammable materials in a shipping container. For example, propane tanks should not be stored, and any gasoline or oil should be drained from any equipment prior to storage. We also caution you against storing delicate items or antique paintings, which need to be stored in a very carefully controlled environment.

Other items that should not be stored in a shipping container include, but are not limited to:

- Old paint
- Paint thinner
- Chemical fertilizers or pesticides
- Cleaning solvents
- Alcohol
- Fireworks
- Weaponry and ammunition
- Radioactive materials
- Perishable items



How to Swim Safely in Rivers and Other Natural Environments

Be Aware of Hazards & Weather

Being water competent in natural water requires additional knowledge and skills than in the pool. Whenever you are near a lake, river, stream or other natural water environment, watch and prepare for:

Unexpected changes in air or water temperature.
Thunder & lightning.
Leave the water immediately.
Stay inside an enclosed area for at least 30 minutes after the last thunder clap.
If outside, avoid open areas, tall, isolated trees and metal objects.¹

- Fast-moving currents, waves and rapids, even in shallow water.
- Hazards, such as dams, underwater obstacles, or rocks and debris.
- Vegetation, animals and fish.
- Drop-offs that can unexpectedly change water depth.
- Other people's activities in the same waters, such as boating.

Establish and Enforce Rules and Safe Behaviors

Take These Water Safety Steps

- Employ [layers of protection](#) including barriers to prevent access to water, life jackets, and close supervision of children to prevent drowning.
- [Ensure every member of your family learns to swim](#) so they at least achieve skills of water competency: able to enter the water, get a breath, stay afloat, change position, swim a distance then get out of the water safely.
- Know [what to do in a water emergency](#) - including how to help someone in trouble in the water safely, call for emergency help and CPR.

TOWNSHIP OF MATACHEWAN RECREATION COMMITTEE

&

MATACHEWAN VOLUNTEER FIRE DEPARTMENT

HAPPY CANADA DAY

MONDAY JULY 1, 2024

11:00AM Canada Day Parade

Leaves from the Fire Hall and goes to the Beach

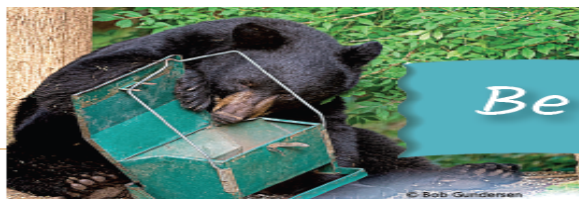
11:30AM Bike Decorating Contest Judging

12:00-2:00PM Free BBQ

11:00AM-4:00PM Inflatables

2:00PM-4:00PM Foam Party

Fireworks at dark
(weather permitting)



Be BearWise
AT HOME

Six At-Home BearWise Basics



Never Feed or Approach Bears

Intentionally feeding bears or allowing them to find anything that smells or tastes like food teaches bears to approach homes and people looking for more. Bears will defend themselves if a person gets too close, so don't risk your safety and theirs!



Secure Food, Garbage and Recycling

Food and food odors attract bears, so don't reward them with easily available food, liquids or garbage.



Remove Bird Feeders When Bears Are Active

Birdseed and grains have lots of calories, so they're very attractive to bears. Removing feeders is the best way to avoid creating conflicts with bears.



Never Leave Pet Food Outdoors

Feed pets indoors when possible. If you must feed pets outside, feed in single portions and remove food and bowls after feeding. Store pet food where bears can't see or smell it.



Clean & Store Grills

Clean grills after each use and make sure that all grease, fat and food particles are removed. Store clean grills and smokers in a secure area that keeps bears out.



Alert Neighbors to Bear Activity

See bears in the area or evidence of bear activity? Tell your neighbors and share information on how to avoid bear conflicts. Bears have adapted to living near people; now it's up to us to adapt to living near bears.

Black bear is a species; common colors include black, brown and cinnamon.



Learn More:
BearWise.org

Helping People Live Responsibly with Black Bears



BearWise® CREATED BY BEAR BIOLOGISTS, SUPPORTED BY STATE WILDLIFE AGENCIES © 2022

I Spy Summer Fun!

